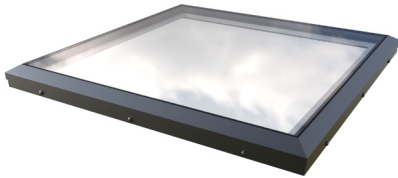
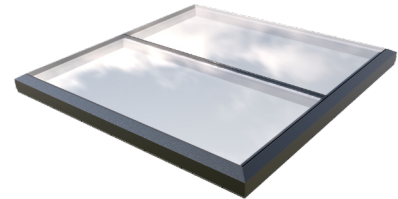


TB440

Glazing options for flat glass rooflight variants

All Brett Martin flat glass rooflight variants feature high performance glazing units with laminated inner panes as standard (as recommended by The Rooflight Association). These glazing options are available for Brett Martin Flat Glass, Circular Glass and Glass Link products.

**Flat Glass****Circular Glass****Glass Link**

Glazing	Light Transmission %	G-value	U-value W/m ² K (Assessed vertically)
Clear (standard)	79	0.61	1.1
Neutral solar control	69	0.35	1.1
Blue solar control	49	0.35	1.1
Bronze solar control	43	0.37	1.1
Grey solar control	38	0.34	1.1
Satin obscure	77	0.60	1.1
Textured obscure	62	0.43	1.1

All glass types are available with Ritec ClearShield Eco-System® easy-clean coating. Please note this coating will only offer a benefit on flat glass rooflights installed at a minimum 7° pitch.

To maintain consistency of supply Brett Martin use a variety of glass suppliers and so the values above are typical but may vary slightly from time to time.

TB440

Glazing options for flat glass rooflight variants



Clear standard

Standard clear glass providing maximum light transmission



Neutral solar control

Neutral appearance glass providing high light transmission, and solar control to help prevent overheating



Blue solar control

Tinted glass providing solar control to help prevent overheating



Bronze solar control

Tinted glass providing solar control to help prevent overheating



Grey solar control

Tinted glass providing solar control to help prevent overheating



Satin obscure

Smooth frosted glass providing high light transmission with privacy



Textured obscure

Textured glass providing high light transmission with privacy